

# ONE UNION SQUARE

## Residence F / G

FLOORS 23 - 24 / 15 - 22

### Alcove Studio | 1 Bathroom

538 SQ FT

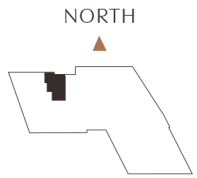
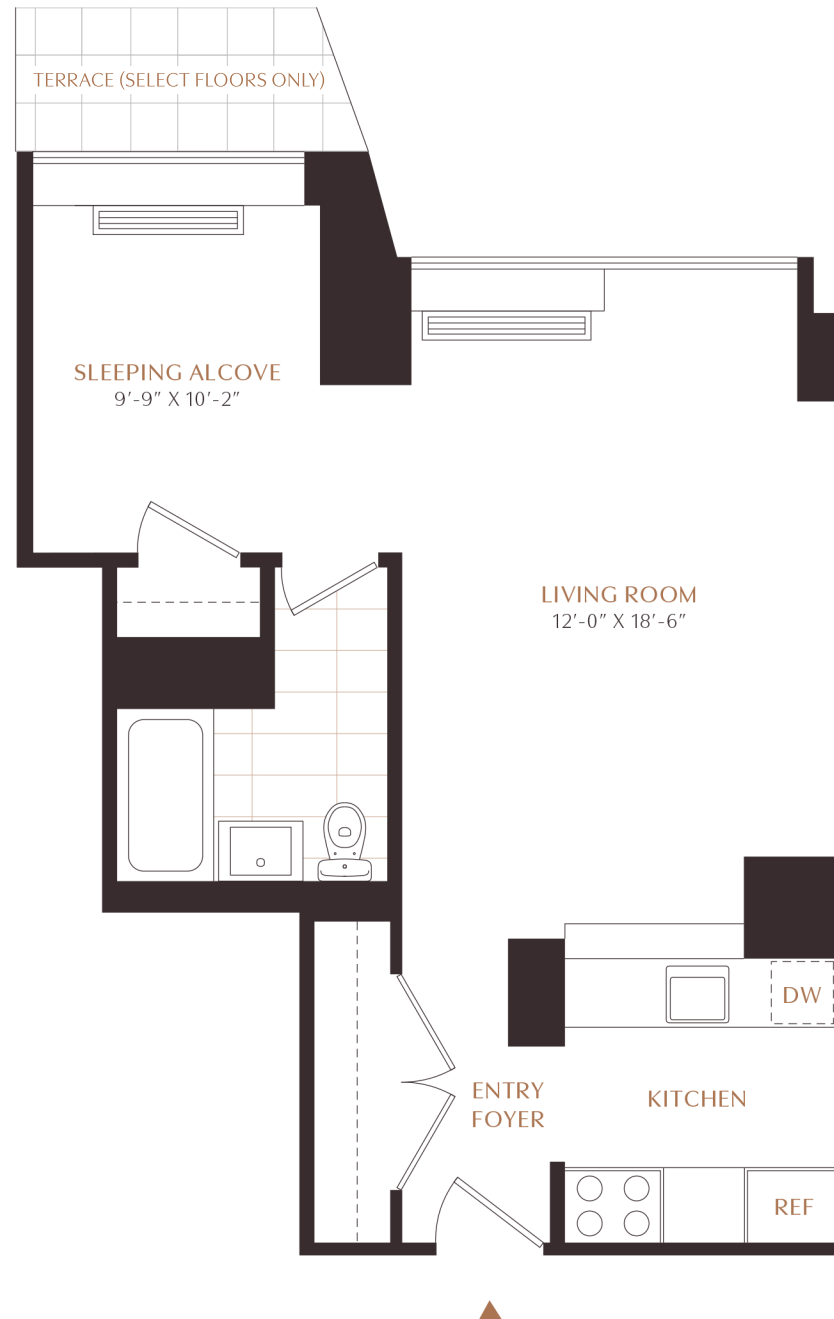
#### Residence Features

- Crestron Smart Home\*
- Motorized Window Shades\*
- Scavolini Custom Kitchen
- TOTO Washlet Toilets\*
- Bosch Appliances
- Oversized Windows
- Expansive Views
- Heated Bathroom Floors
- Caesarstone Kitchen Countertops
- Frameless Glass Shower Door
- In Unit Washer Dryer\*
- Full Service Building

*\*Only in select units*

All dimensions are approximate. Plans and dimensions may contain minor variations from floor to floor. Equal housing opportunity.

UNION SQUARE PARK VIEW



SCALE 3/16" = 1'0"

---

Residence      23F   24F   15G   16G   17G   18G   19G   20G   21G   22G

Monthly Rent    \$

Move In                /    /

Amenity Fee      \$

---

Notes

---

Leasing Contact

---



### Level X Amenities

#### 1 PARK

Sun Terrace

Landscaped Great Lawn

Grills and Entertainment Space

Sweeping Downtown Views

#### 1 SOCIAL

Indoor Resident Lounge

Outdoor Event Space\*

Conference Room

Culinary Entertainment Kitchen

#### 1 TRAINING

State-of-the-art Fitness Center

Cutting Edge Outdoor Training Facility\*

### Building Features

24-hour Attended Lobby and Concierge

The "Metronome", 100-ft Exterior Art Piece

Valet Dry Cleaning

Bike Storage\*

Community Laundry Room

Pet Friendly

*\*Coming Soon*