

RESIDENCES

1119
1222-1822

FLOORS 11-18

2 BEDROOMS
2 BATHROOMS

THE GRAND

BY GEHRY

RESIDENCE FEATURES

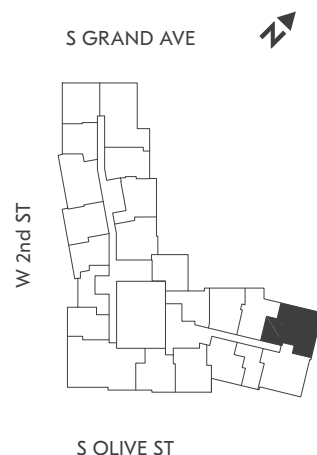
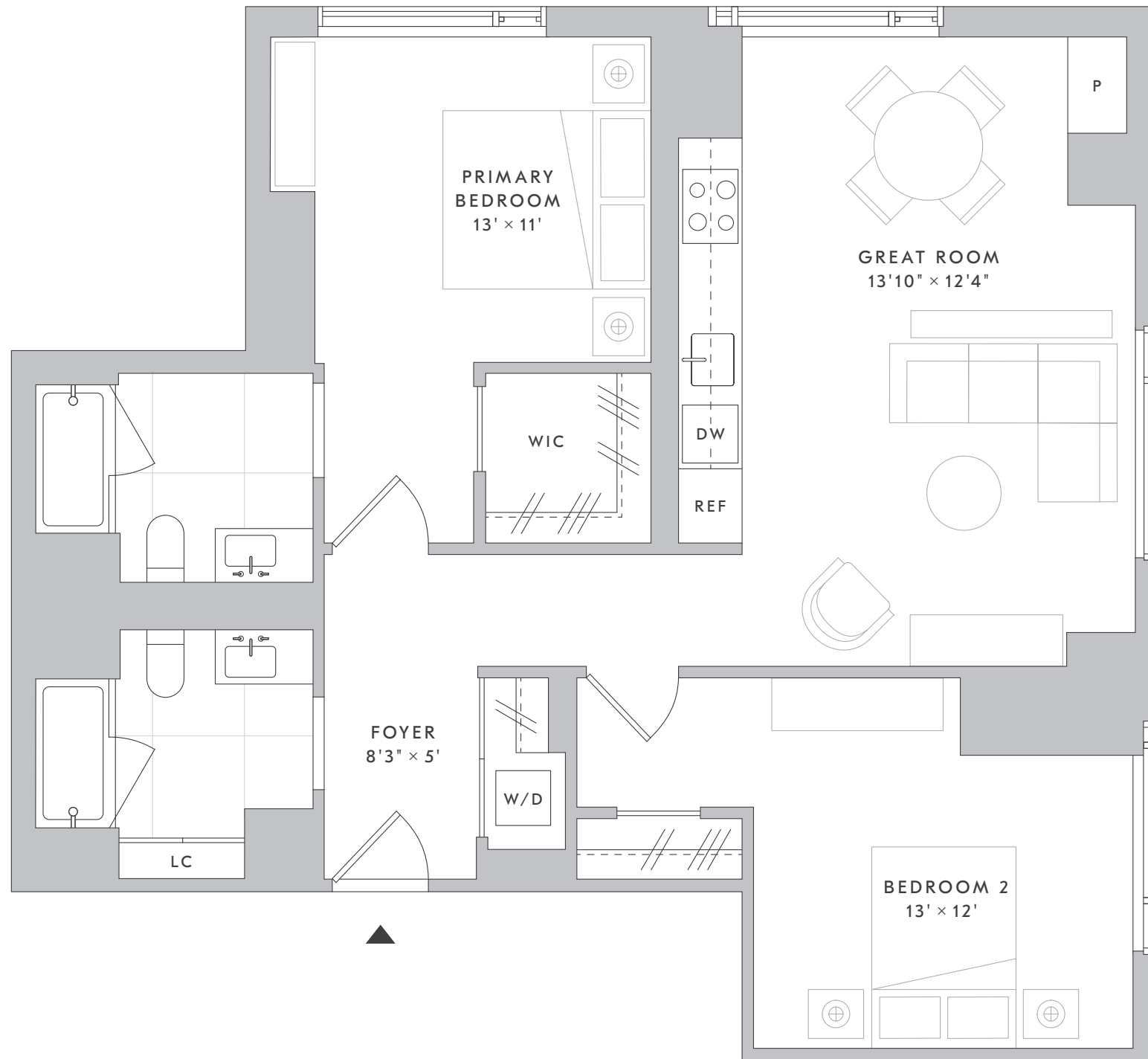
- 9' ceilings and 6" wide-plank oak flooring throughout
- Open kitchens with white stone counters, dramatic Blue Fusion stone backsplash, and oak cabinetry with under-cabinet lighting and soft-close drawers
- Bosch Smart Home stainless steel appliances with Home Connect technology
- Luxe baths with white stone counters atop a custom oak vanity; glass-enclosed shower/bathtub with Hansgrohe matte nickel fixtures; and oversized porcelain tile flooring and wet walls
- Bosch stacked washer and dryer
- Nest Thermostat with resident-controlled air-conditioning and heating
- Customizable Elfa closet-shelving system
- Blackout shades in bedrooms and sheer shades in living areas
- Salto keyless entry system

INDOOR & OUTDOOR AMENITIES

- 24/7 attended lobby with soaring 24' ceilings; anchored by a sculptural Frank Gehry-designed concierge desk and chandeliers set against an original Frank Gehry-designed art wall
- Landscaped Garden Terrace that wraps around the entire 10th floor, with a pool deck, BBQ grills, and private outdoor dining areas overlooking Walt Disney Concert Hall
- The Grand Lounge for ideal entertaining, with a display kitchen, chef's table, and dedicated outdoor terrace complete with firepits, BBQ grill, and informal seating
- State-of-the-art fitness center with private yoga studio and wraparound terrace; equipped with cardiovascular and strength-training equipment
- Business Lounge with a complimentary coffee bar; private, enclosed offices; a large conference room; individual work pods; and an adjacent terrace with outdoor seating, firepits, and BBQ grills
- Bar with custom-designed billiards table and oversized TV
- Theater with 85" TV, plush seating, and serving bar

BENEFITS & SERVICES

- On-site, 24/7 valet parking and electric vehicle charging stations
- Alfred, offering weekly in-home services and local experiences
- Complimentary Wi-Fi in all common spaces
- Storage lockers and bike storage for residents
- Anticipated LEED Gold certification
- Exclusive dog daycare by Dog City for essential pet services, including playgroups, dog walking, and training
- Expansive destination retail and dining, spanning three levels of landscaped terraces



This floor plan is intended for illustrative purposes only. Dimensions and square footages are approximate and variations in the layout shown may occur. Additional charges may apply to building services, benefits and amenities. Benefits and services are subject to change and are not an essential, required or ancillary service provided by the landlord. All features and specifications are subject to change. Copyright 2022 Related. Related does not discriminate against race, color, sex, religion, national origin, familial status or disability. Equal Housing Opportunity.

LIVEGRANDLA.COM 213 799 0000

RELATED