



BUILDING AMENITIES

- ▶ Elegant Porte Cochère Entrance Drive
- ▶ 24-Hour Concierge-Attended Lobby Appointed in Imported Woods and Marble with Glass Loggias plus Oval Wood and Marble Elevator Vestibule
- ▶ State-of-the-Art Health and Fitness Center with Cybex, Stairmaster, Quinton and Cardio Theatre with Yoga Room**
- ▶ Skylit Indoor Pool with Adjacent Sun Deck**
- ▶ Lushly Landscaped Private Garden
- ▶ RelatedStyle Services™ including Personal Assistant Services, Convenient Credit Card Rent Payment, and Move-In Coordination***
- ▶ Valet Garage Parking Onsite**
- ▶ Interactive Children's Play and Party Room**
- ▶ Professionally Designed Business Center with Fax, Copier, and Internet Access**
- ▶ Storage Space**
- ▶ Bicycle Room**
- ▶ Valet Services**
- ▶ Laundry Room on Every Floor
- ▶ Convenient ATM in Lobby
- ▶ Professional On-Site Leasing & Management Service Centers

APARTMENT FEATURES

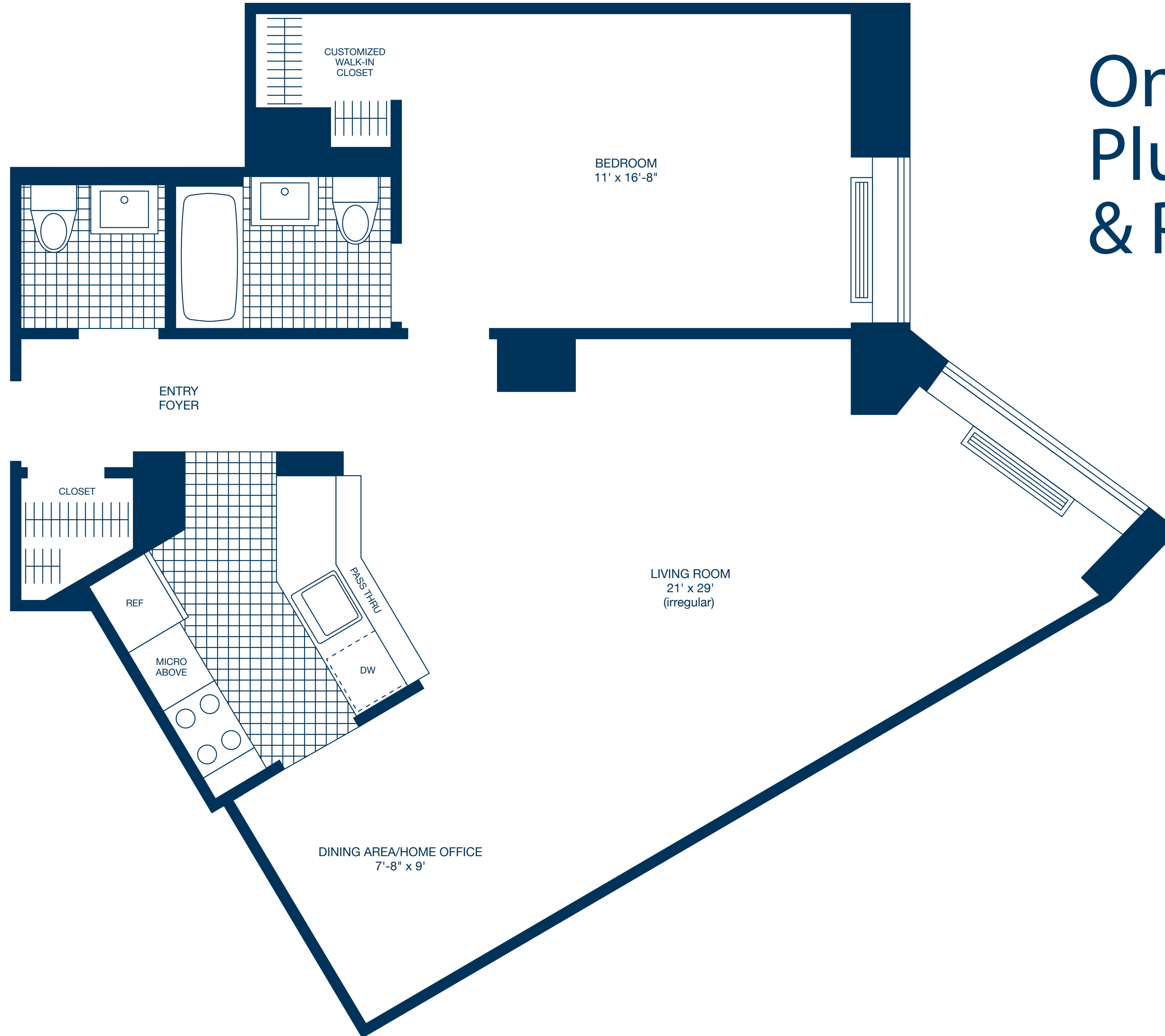
- ▶ Floor-to-Ceiling Windows*
- ▶ Terraced Apartments*
- ▶ Gourmet Kitchens with Granite Counters, Microwaves, Self-Cleaning Ovens, Ice Maker/Frost-Free Refrigerators, Dishwashers and Ceramic Tile Floors
- ▶ Contemporary Bathrooms with Marble Walls and Floors, Pedestal Sinks and Custom Designed Medicine Storage Cabinets with Tri-View Mirrors
- ▶ Granite Window Sills and Designer Mini-Blinds
- ▶ Windowed Kitchens*
- ▶ Walk-In Closets* and Customized Closets
- ▶ Oak Parquet Floors in Living Room, Dining Room, and Foyers
- ▶ Wall-to-Wall Carpeted Bedrooms
- ▶ Individual Intrusion Alarms
- ▶ Individually-Controlled Heating and Air Conditioning
- ▶ Prewiring for Multiple Phone Lines and High Speed Internet Access

* In Select Residences **Additional Charge ***Additional Charge for Some Services

MANAGEMENT & LEASING CENTER

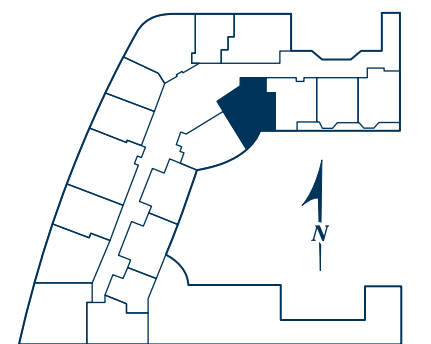
▶ (212) 945-4100 fax (212) 945-4101
 tribecaparkleasing@related.com
 www.tribecapark.com

EQUAL HOUSING OPPORTUNITY



One-Bedroom Plus Home Office & Powder Room

Residence S Floors 3-10



FLOOR _____
 MONTHLY RENT _____
 All Dimensions Are Approximate