



BUILDING AMENITIES

- Stunning Contemporary Lobby and Interiors by The Rockwell Group
- 24-Hour Concierge, and Doorman Service
- State-of-the-Art Health and Fitness Center, Technogym Strength Training and Cardio-Theater with Individual T.V. Screens, 1/2 Court Basketball, and Landscaped Garden with BBQ Grill**
- Business Center with Video-Teleconferencing**
- Landscaped Rooftop Sun Terrace
- Dramatic Rooftop Party Lounge with Private Terrace**
- 24-Hour Attended Parking with Direct Building Access**
- Bicycle Room**
- Valet, Maid, and Dry Cleaning Services**
- Over 200 Channel Cable and/or Satellite TV Service**
- Multiple Hi-Tech Media Outlets in Every Room for Telephones, Cable, Computers, and Data Services
- Convenient ATM in Lobby
- Professional On-Site Leasing and Management Service Center

APARTMENT FEATURES

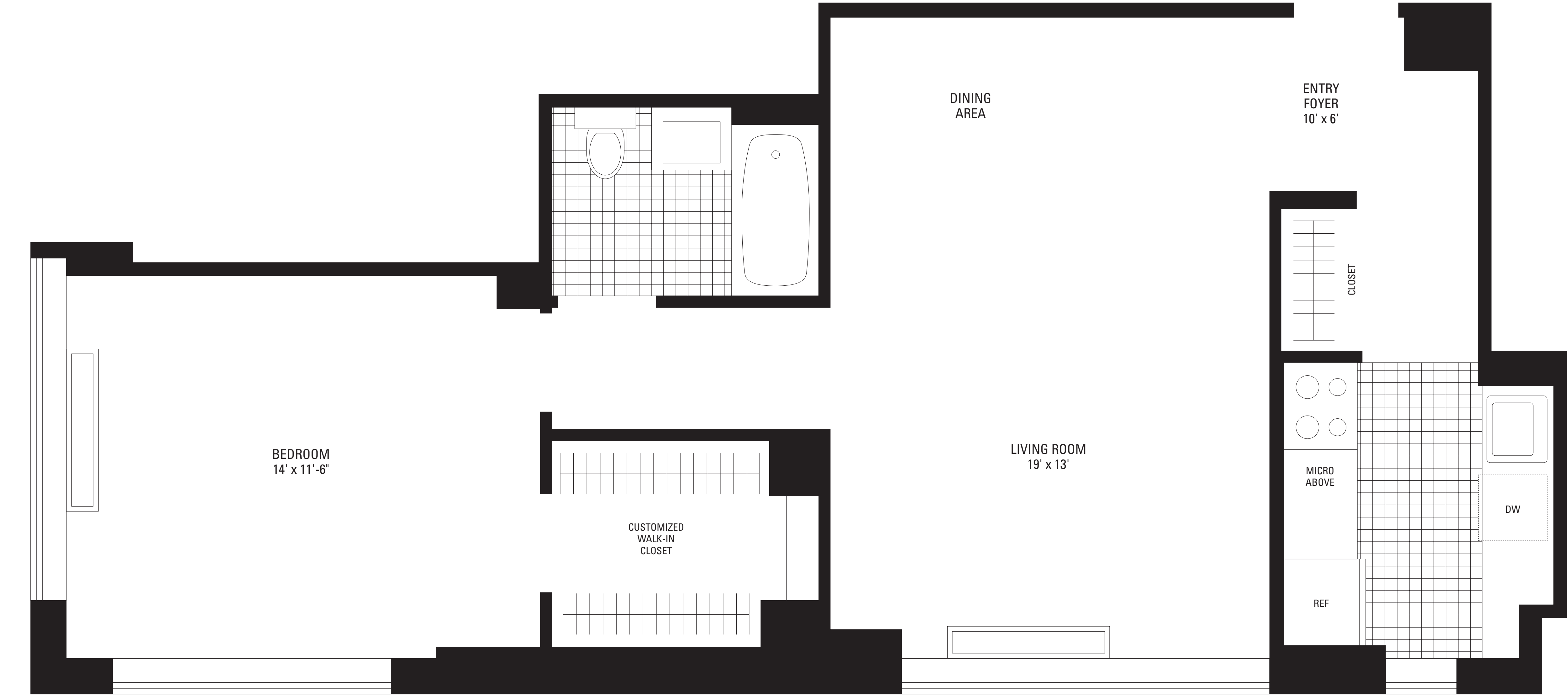
- Gourmet Granite Kitchens with Ceramic Tile Floors, Custom Designed All-White European-Style Glass Door Cabinetry and Appliances including Microwaves, Ranges with Self-Cleaning Ovens, Porcelain Sinks, and Frost-Free Refrigerators with Ice Makers
- Sumptuous Marble Baths with Pedestal Sinks
- Granite Window Sills and Designer Mini-Blinds
- Washer/Dryer in Every Residence (Floors 17-PH)
- Laundry Room on Every Floor (Floors 5-16)
- Oversized Windows for Maximum Light and Views
- Walk-In Closets* and Customized Closets
- Strip-Wood Flooring
- Individually-Controlled Heating and Air Conditioning
- Private Terraces*

MANAGEMENT AND LEASING CENTER

- (212) 581-5858 fax (212) 581-8866
- thewestportleasing@related.com

* In Select Residences **Additional Charge

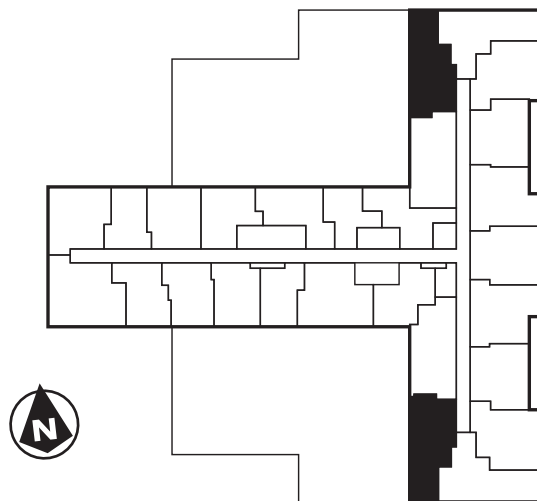
We are pledged to the letter and spirit of U.S. policy for the achievement of equal housing opportunity throughout the nation. We encourage and support an affirmative advertising and marketing program in which there are no barriers to obtaining housing because of race, color, religion, sex, handicap, familial status, or national origin.



FLOOR _____

MONTHLY RENT _____

All Dimensions Are Approximate



CORNER ONE BEDROOM

- Residence 15 ■ Floors 5-9
- Residence 25 ■ Floors 5-9 (reverse)