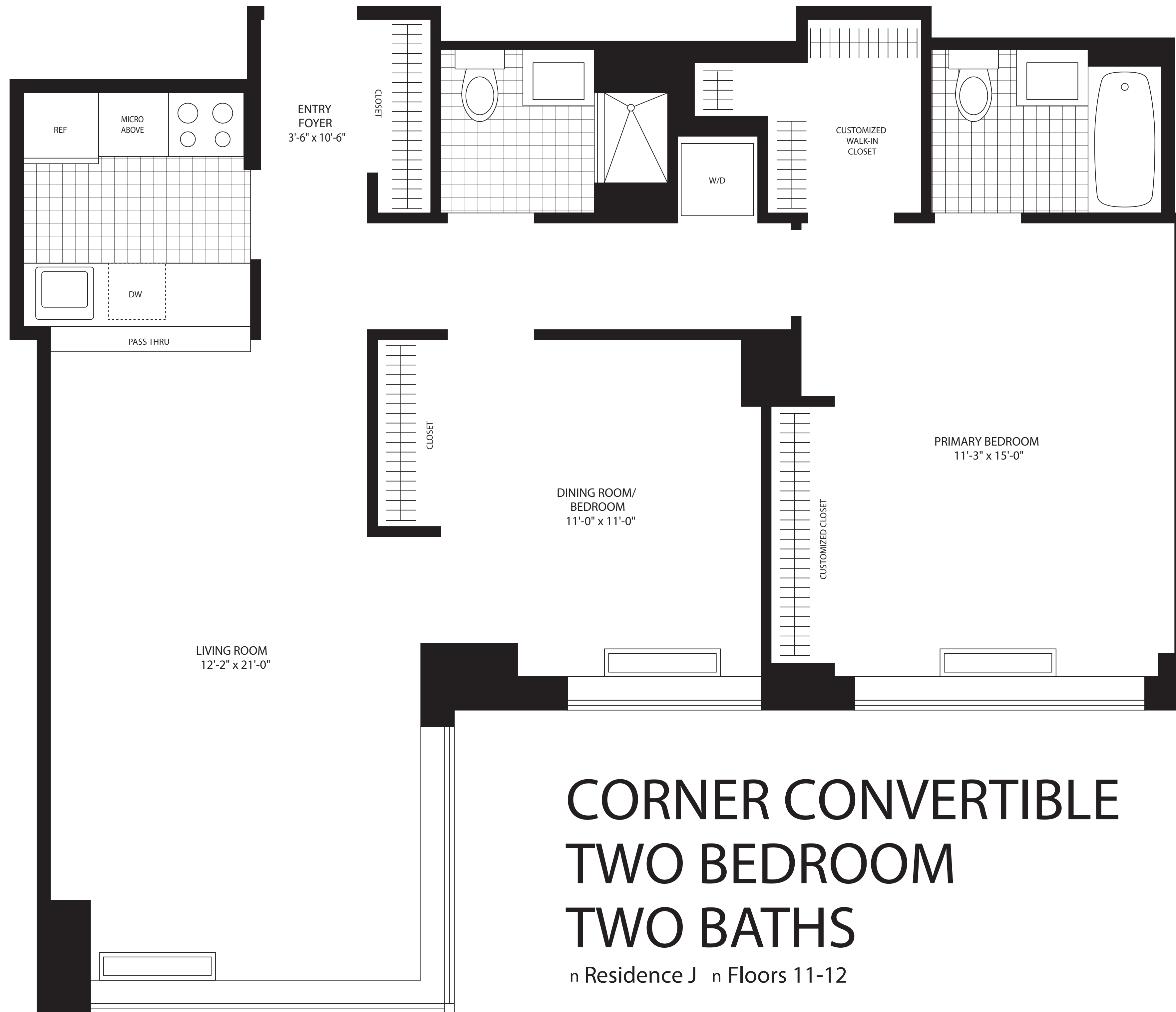




THE SIERRA
where skyline meets treelined



ENTRY FOYER
3'-6" x 10'-6"

CUSTOMIZED WALK-IN CLOSET

DINING ROOM/
BEDROOM
11'-0" x 11'-0"

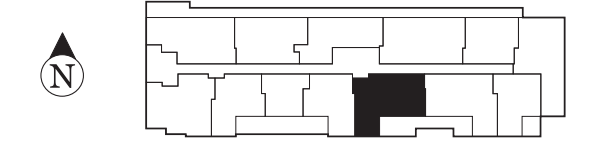
PRIMARY BEDROOM
11'-3" x 15'-0"

LIVING ROOM
12'-2" x 21'-0"

CORNER CONVERTIBLE TWO BEDROOM TWO BATHS

n Residence J n Floors 11-12

FLOOR-TO-CEILING SOLARIUM WINDOW



FLOOR

MONTHLY RENT

All Dimensions Are Approximate