



BUILDING FEATURES

- Interiors Designed by Acclaimed Marmol Radziner + Associates
- 24-Hour Attended Lobby with Concierge
- Outdoor Pool and Spa with Lounge Seating and Outdoor Kitchen
- Penthouse Entertainment Lounge with Catering Kitchen
- Penthouse Terrace with Outdoor Kitchen, Fireplace and Televisions
- Fitness Center and Yoga Studio with Steam Rooms
- Library and Technology Lounge, Fireplace and Coffee Station
- Media Lounge with Oversized Television and Wet Bar
- Pet Spa and Dog Run
- Complimentary Bicycle Storage
- Onsite Garage Parking and Electric Car Charging Stations
- Smoke-Free Building
- Related*Style* Services®, the Related Personal Assistant, Move-In Coordination, In-Home Package Delivery and the Related Technology Concierge*
- Onsite restaurant by acclaimed LA Restaurateur, Ago

APARTMENT FEATURES

- Gourmet Kitchens Feature Caesarstone Counters with Walnut Cabinetry
- Deluxe Stainless Steel Appliances: Fisher & Paykel Refrigerator with Bottom Freezer Drawer, Bosch Range, Dishwasher and Microwave
- Lavish Baths with Marble Counters and Tub Surround, Walnut Vanity and Mirrored Medicine Cabinets
- Wood Flooring throughout the Living Area
- Washer/Dryer in Each Home
- Resident Controlled Heating and Air Conditioning with Nest Thermostats
- Keyless Entry

*Additional Charge for Select Services

Live In Downtown's Ultimate Work of Art

LEASING CENTER | T 213.337.9900

225 S. Grand Avenue, Los Angeles, CA 90012

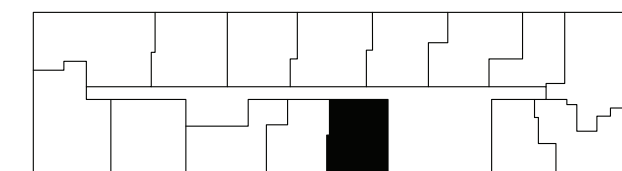
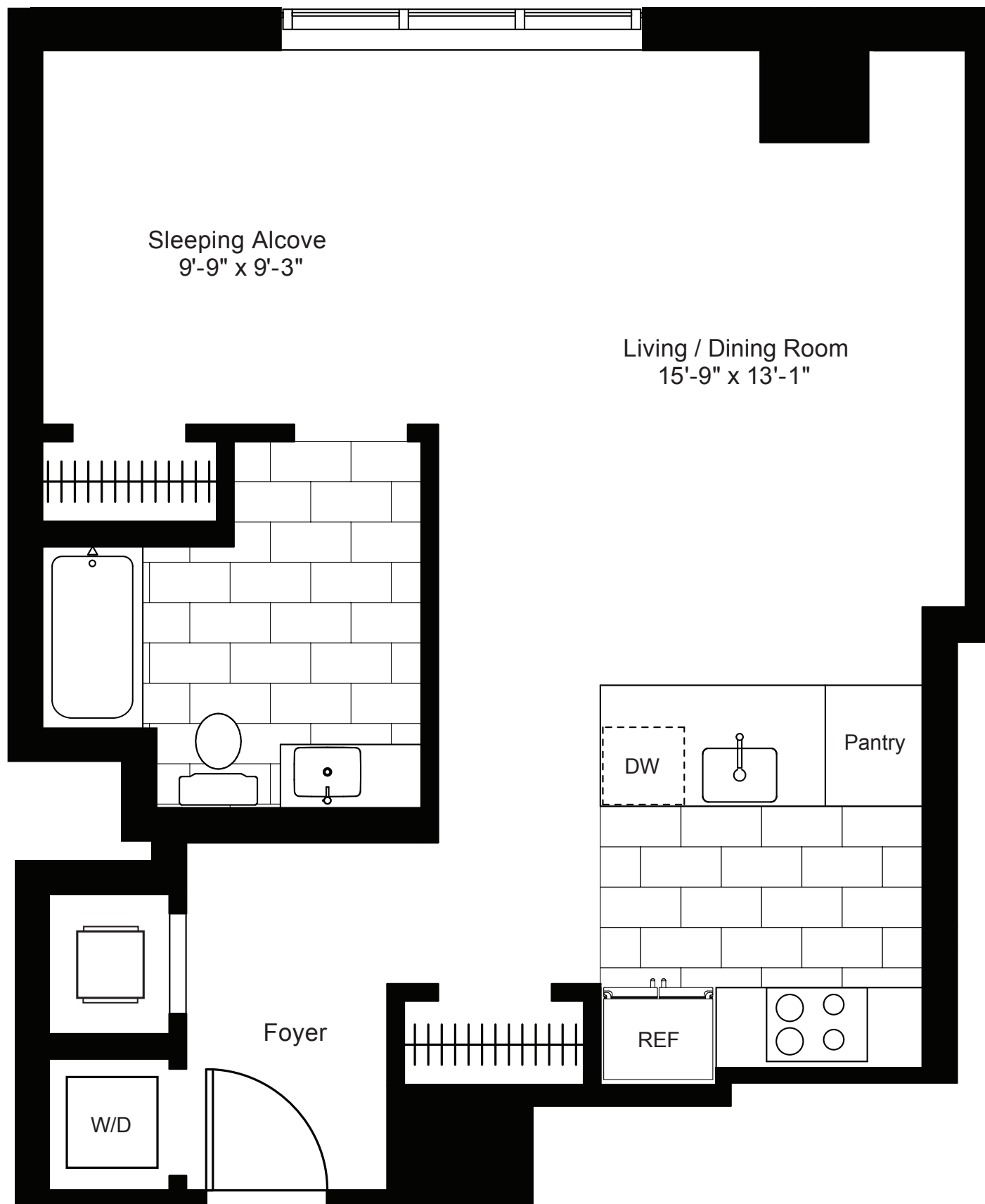
EmersonLeasing@Related.com | TheEmersonLA.com



All Measurements Are Approximate

RESIDENCE 1

Floors 12-20
Studio | 1 Bath



FLOOR _____

MONTHLY RENT _____