

**BUILDING AMENITIES**

- Stunning Assouline Culture Lounge and Browsing Library in the Lobby
- Zen Meditation Courtyard
- Luxurious Entertainment Lounge with Beautifully Landscaped Outdoor Dining Terrace and BBQ Grills\*\*
- Furnished Sundeck and Landscaped Gardens
- Children's Interactive Play and Party Room\*\*
- Professionally Designed Business Center with Internet Access\*\*
- Pet Spa\*\*
- RelatedStyle Services™ including Personal Assistant Services, Convenient Credit Card Rent Payment, and Move-In Coordination\*\*\*
- 24-Hour Concierge, and Doorman Service
- State-of-the-Art Equinox Health Club On Site with Private Residents' Only Lounge\*\*
- Bicycle Room and Resident Storage\*\*
- 24-Hour Valet Parking with Direct Building Access\*\*
- Wireless Internet Access in Public Spaces
- 200+ Channel Cable and/or Satellite TV Service\*\*
- Valet, Maid and Dry Cleaning Services\*\*
- Electronic Package Notification System
- Convenient On-Site ATM
- Professional On-Site Leasing and Resident Service Centers

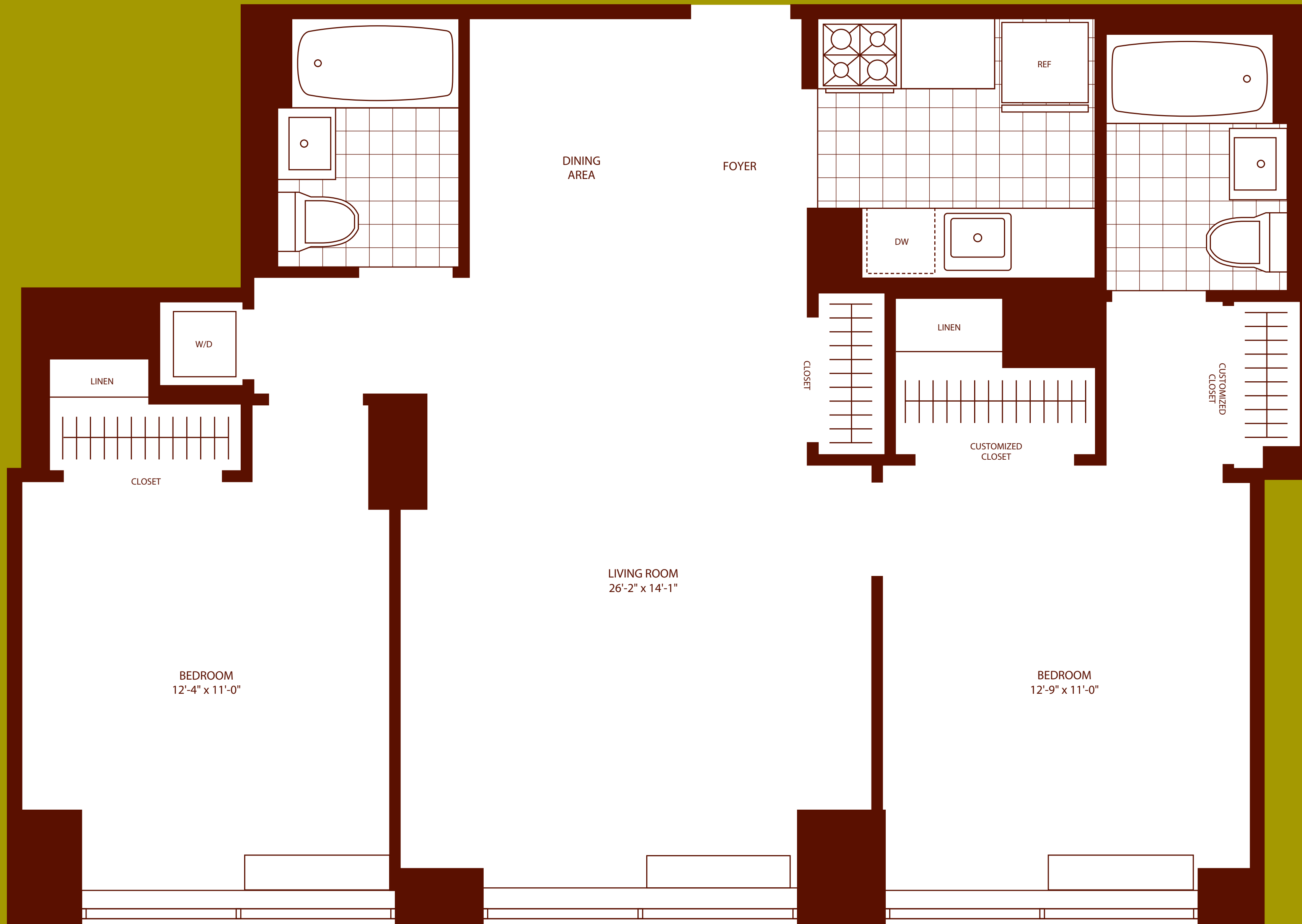
**APARTMENT FEATURES**

- Bamboo Plank Flooring
- Clodagh Custom Kitchens with Bamboo Finish Cabinetry and GoldenToned Quartzite Countertops and Backsplashes
- KitchenAid Stainless Steel Appliances Including Frost-Free Refrigerators with Freezer Drawers, Microwaves, Ranges with Self-Cleaning Ovens, and Dishwashers
- Golden Sand Stone-Tiled Bathrooms, Custom Designed by Clodagh with Arctic White Corian Vessel Sinks and Satin Nickel Fixtures
- Oversized Windows Throughout for Maximum Light
- Custom Designed Lighting
- Stackable Miele Washer and Dryer in Every Residence
- Resident Controlled Heating and Air Conditioning
- Select Residences Feature Private Terraces
- Spacious Walk-In Closets\*

\* In Select Residences \*\*Additional Charge  
\*\*\*Additional Charge for Some Services

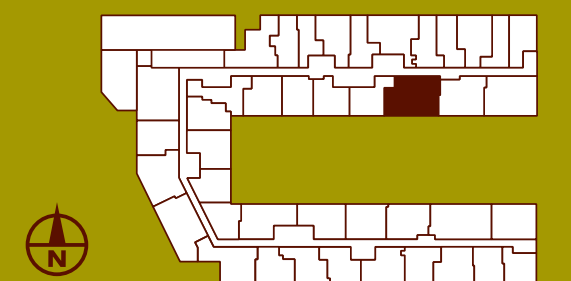
**MANAGEMENT AND RESIDENT SERVICE CENTER**

- (212) 633-1717 fax (212) 633-9977
- caledonialeasing@related.com



**TWO BEDROOM WITH DINING AREA**

Residence 14 Floors 4-9



FLOOR \_\_\_\_\_

MONTHLY RENT \_\_\_\_\_

All Dimensions Are Approximate