

T

THE TATE

BUILDING AMENITIES

- Stunning Contemporary Lobby and Interiors by The Rockwell Group
- 24-Hour Doorman and Concierge
- State-of-the-Art Skylit Health and Fitness Center with Technogym Strength Training and Cardio-Theater with Private Screens**
- Professionally Designed Business Center with Teleconferencing, Fax, Copier and Internet Access**
- RelatedStyle Services* including Personal Assistant Services, Convenient Credit Card Rent Payments, and Move-In Coordination***
- Lushly Landscaped Courtyard Garden
- Landscaped Rooftop Sun Terrace with Outdoor Shower and BBQ Dining
- Skylit Entertainment Room**
- Bicycle Room**
- Valet, Maid, and Dry Cleaning Services**
- Over 200 Channel Cable and/or Satellite TV Service**
- Multiple Media Outlets in Every Room for Telephones, Cable, Computers, and Data Services
- Professional On-Site Leasing and Management Service Center

APARTMENT FEATURES

- Washer/Dryer in Every Apartment
- Oversized Window for Maximum Light and Views
- Gourmet Granite Kitchens with Custom Designed European-Style Glass Door Cabinetry, Ceramic Tile Floors, and Stainless Steel Appliances including Sinks, Microwaves, Ranges with Self-Cleaning Ovens, and Frost-Free Refrigerators with Ice Makers
- Custom Designed European Bathrooms with Vessel Sink, Wood Vanity Base, Stone Floors, Walls and Vanity Top
- Granite Window Sills and Designer Mini-Blinds
- Walk-In Closets* and Customized Closets
- Oak Parquet Floors in Living Rooms and Entry Ways
- Wall-to-Wall Carpeted Bedrooms
- Individual Intrusion Alarms
- Individually-Controlled Heating and Air Conditioning
- Private Terraces*

* In Select Residences **Additional Charge
**Additional Charge For Some Services

MANAGEMENT & LEASING CENTER

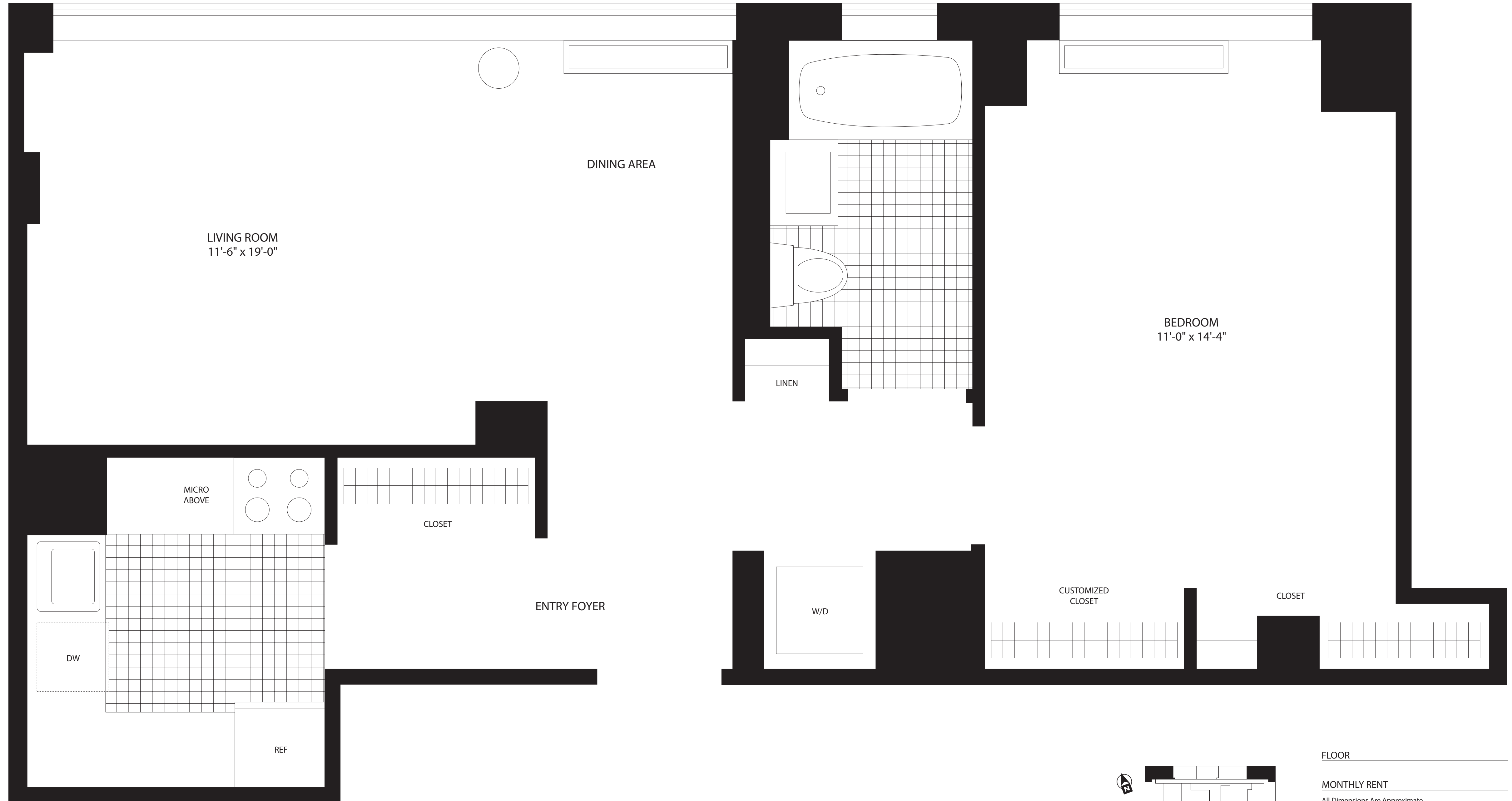
(212) 255-2200 fax (212) 255-2202
thetateleasing@related.com

Equal Housing Opportunity

ONE BEDROOM

Residence ND Floors PH1-PH3

Residence NM Floors PH1-PH3 (reverse)



N PH1 D

FLOOR _____

MONTHLY RENT _____

All Dimensions Are Approximate