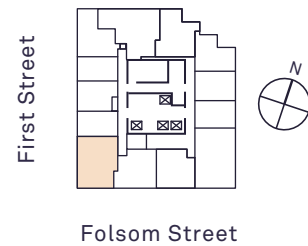
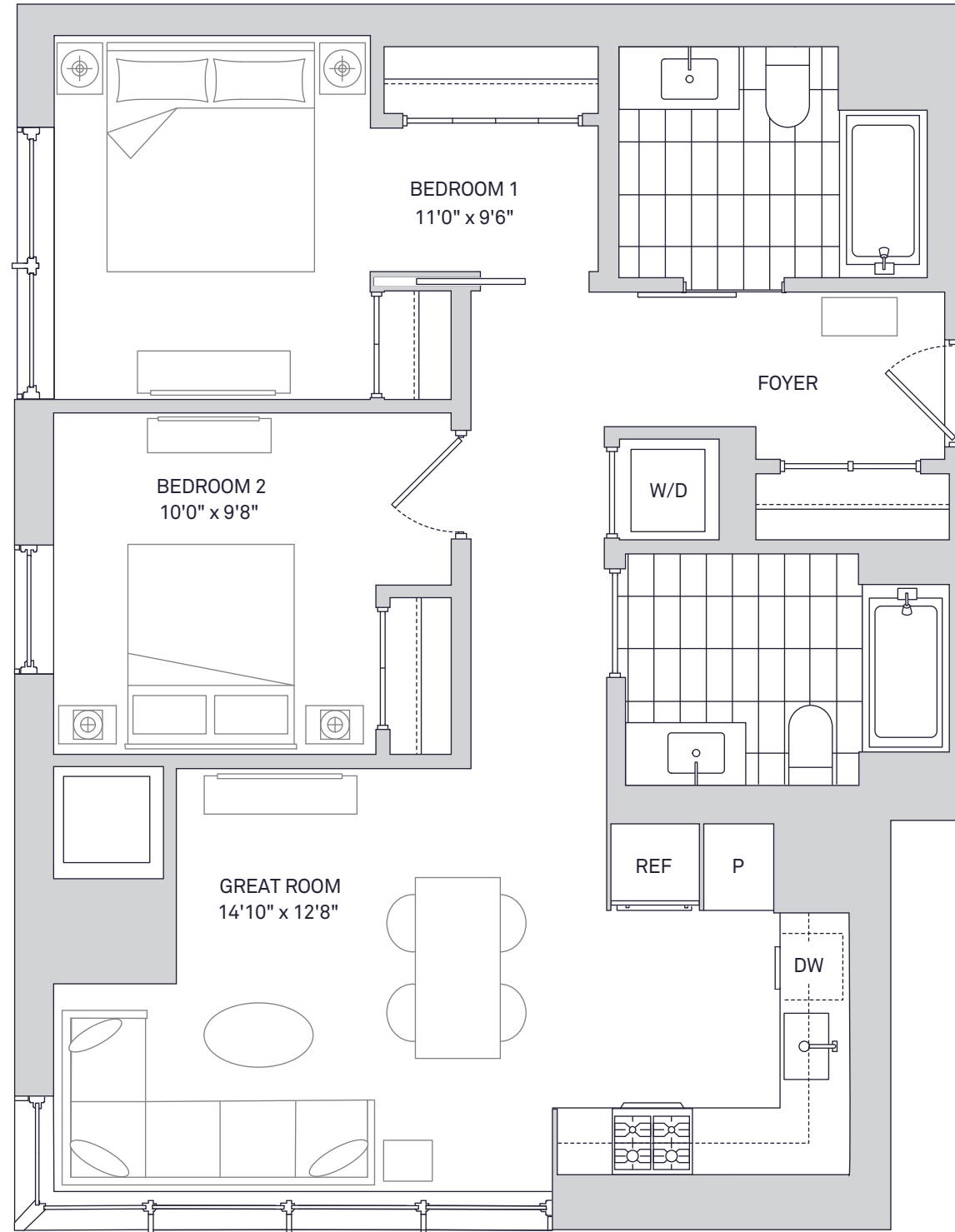


# Residence 3110 Residence 3206

2 Bedrooms, 2 Bathrooms



Notes

---



---

# AVERY 450

## Residence Features

- Floor-to-ceiling windows provide maximum natural light and views
- Wide-plank, white oak flooring throughout
- White quartz kitchen counters with a full-height Carrara marble tile backsplash
- Custom-designed walnut kitchen cabinetry
- Suite of premium Bosch appliances with integrated paneling
- Serene bathrooms feature a walnut vanity, white quartz counters, and a mirrored medicine cabinet
- Bathtub/shower combination with textured tiled tub surround
- Smart home technology includes Nest thermostats and Lutron lighting controls
- 9-foot ceilings\*
- Washer/dryer in every home

\*9-foot ceilings featured on residential floors 8-32

## Amenities & Services

- 24/7 attended lobby with concierge
- Equinox®-curated fitness center with yoga room and his/hers locker rooms with steam shower
- 60-foot lap pool
- Business and technology lounge with computers, printer, complimentary coffee, and private conference rooms
- Outdoor terrace and barbecue grills
- Media and game room with custom billiards table, TV, and bar
- Demonstration kitchen and chef's table
- 24/7 valet parking with electric vehicle charging stations
- Home manager and move-in coordination from *Life Simplified* by Related and Hello Alfred
- Residents-only on-demand car share program
- Complimentary wireless internet access in common areas
- Package delivery lockers

[Avery450.com](http://Avery450.com)

On-site Management and Leasing Office: 415-228-8910  
450 Folsom Street, San Francisco, CA 94105