

BUILDING AMENITIES

- Stunning Assouline Culture Lounge and Browsing Library in the Lobby
- Zen Meditation Courtyard
- Luxurious Entertainment Lounge with Beautifully Landscaped Outdoor Dining Terrace and BBQ Grills**
- Furnished Sundeck and Landscaped Gardens
- Children's Interactive Play and Party Room**
- Professionally Designed Business Center with Internet Access**
- Pet Spa**
- RelatedStyle Services™ including Personal Assistant Services, Convenient Credit Card Rent Payment, and Move-In Coordination***
- 24-Hour Concierge, and Doorman Service
- State-of-the-Art Equinox Health Club On Site with Private Residents' Only Lounge**
- Bicycle Room and Resident Storage**
- 24-Hour Valet Parking with Direct Building Access**
- Wireless Internet Access in Public Spaces
- 200+ Channel Cable and/or Satellite TV Service**
- Valet, Maid and Dry Cleaning Services**
- Electronic Package Notification System
- Convenient On-Site ATM
- Professional On-Site Leasing and Resident Service Centers

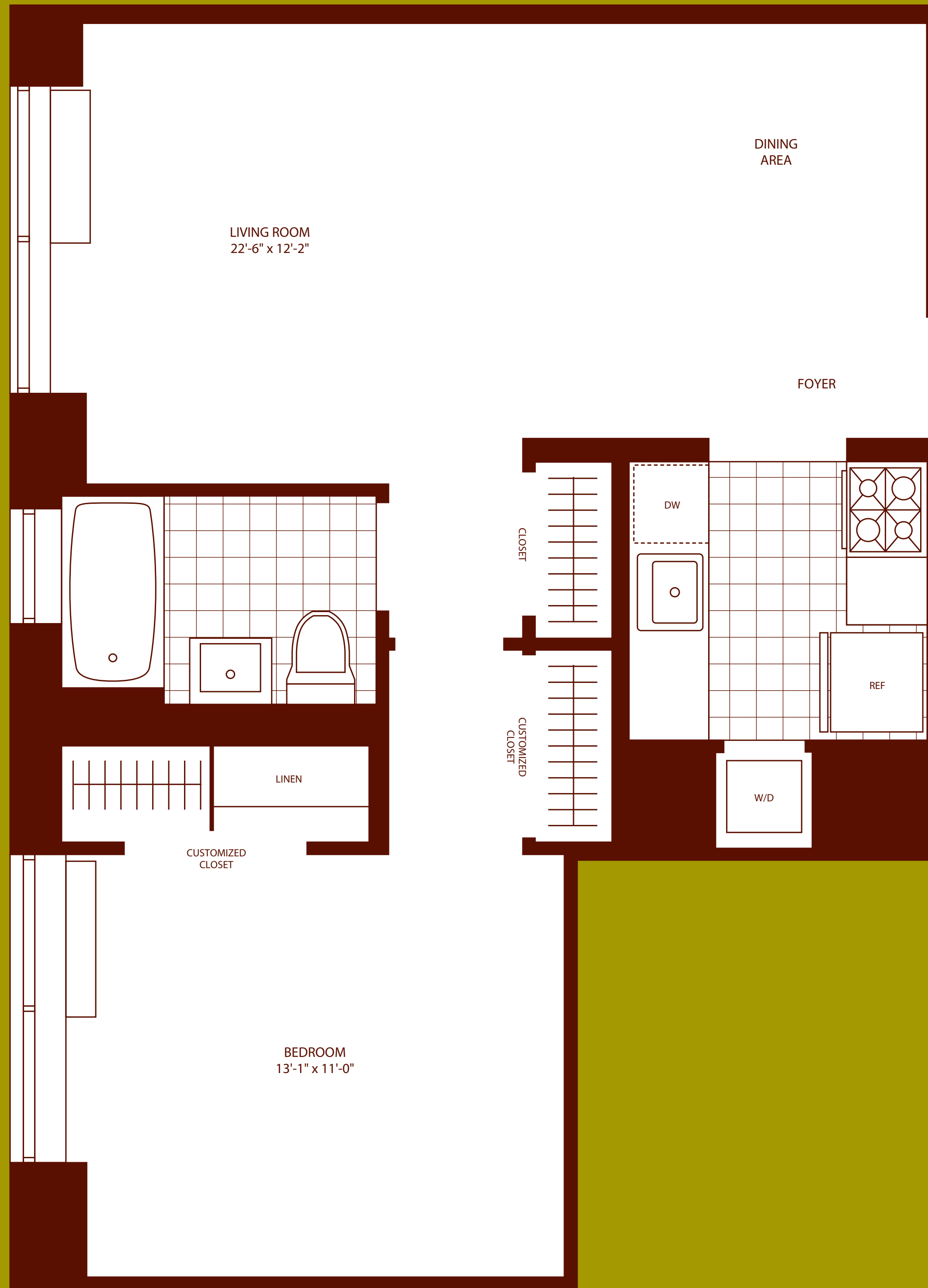
APARTMENT FEATURES

- Bamboo Plank Flooring
- Clodagh Custom Kitchens with Bamboo Finish Cabinetry and GoldenToned Quartzite Countertops and Backsplashes
- KitchenAid Stainless Steel Appliances Including Frost-Free Refrigerators with Freezer Drawers, Microwaves, Ranges with Self-Cleaning Ovens, and Dishwashers
- Golden Sand Stone-Tiled Bathrooms, Custom Designed by Clodagh with Arctic White Corian Vessel Sinks and Satin Nickel Fixtures
- Oversized Windows Throughout for Maximum Light
- Custom Designed Lighting
- Stackable Miele Washer and Dryer in Every Residence
- Resident Controlled Heating and Air Conditioning
- Select Residences Feature Private Terraces
- Spacious Walk-In Closets*

* In Select Residences **Additional Charge
***Additional Charge for Some Services

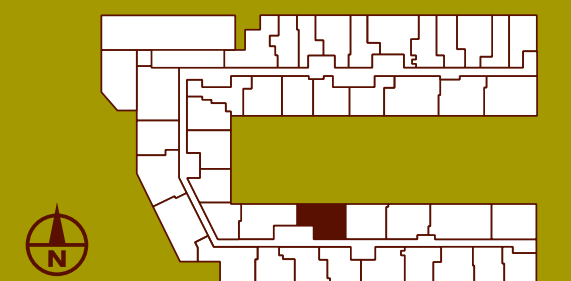
MANAGEMENT AND RESIDENT SERVICE CENTER

- (212) 633-1717 fax (212) 633-9977
- caledonialeasing@related.com



ONE BEDROOM WITH DINING AREA AND WINDOWED BATH

Residence 25 | Floors 4-9



FLOOR

MONTHLY RENT

All Dimensions Are Approximate